

Jubilance

The musical score for "Jubilance" is presented in three systems. The first system includes Violin, Viola, and Piano parts. The second system includes Violin (Vln.), Viola (Vla.), and Piano (Pno.) parts. The third system includes Violin (Vln.), Viola (Vla.), and Piano (Pno.) parts. The score is in 4/4 time with a key signature of one sharp (F#). The first system features a melodic line in the Violin and Piano, with the Viola providing harmonic support. The second system introduces a five-measure phrase in the Violin and Piano, marked with a fermata (5) and a trill (tr). The third system continues the melodic development in the Violin and Piano, with the Viola playing a more active role. The score includes various musical notations such as slurs, accents, and dynamic markings like *Red.* and *tr*.

Violin

Viola

Piano

5

Vln.

Vla.

Pno.

9

Vln.

Vla.

Pno.

15

Vln.

Vla.

Pno.

This section of the score covers measures 15, 16, and 17. It features three staves: Violin (Vln.), Viola (Vla.), and Piano (Pno.). The key signature is one sharp (F#) and the time signature is 3/8. The Violin part begins with a rest in measure 15, followed by eighth-note patterns. A wavy hairpin symbol is placed above the staff in measure 16, and a trill (tr) is marked above the final note in measure 17. The Viola part plays a steady eighth-note accompaniment. The Piano part is divided into two staves; the right hand has a melodic line with a wavy hairpin in measure 16 and a trill in measure 17, while the left hand provides a bass line with a wavy hairpin in measure 16. The word "Ped." (pedal) is written below the left hand in measures 15 and 16. Asterisks are placed below the left hand in measures 16 and 17.

18

Vln.

Vla.

Pno.

This section of the score covers measures 18, 19, and 20. It features three staves: Violin (Vln.), Viola (Vla.), and Piano (Pno.). The key signature is one sharp (F#) and the time signature is 3/8. The Violin part starts with a wavy hairpin in measure 18 and ends with a double bar line in measure 20. The Viola part plays eighth-note accompaniment. The Piano part is divided into two staves; the right hand has a melodic line with a wavy hairpin in measure 18 and ends with a double bar line in measure 20. The left hand plays a bass line with a wavy hairpin in measure 18 and ends with a double bar line in measure 20.

Flute

Jubilance

6

12

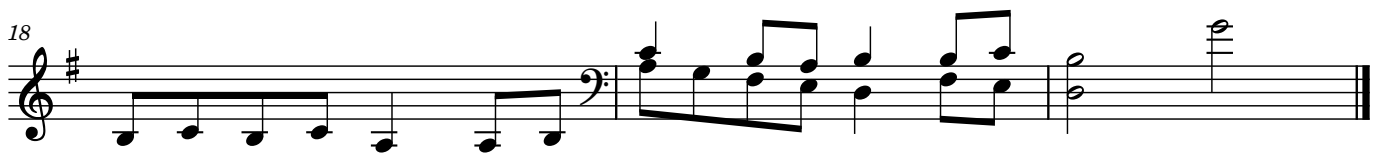
18

tr

tr

B \flat Clarinet

Jubilance



Piano

Jubilance

Red. * Red. * Red. *

5 *tr* *w*

9 *w*

15 *Red.* *w* *tr* *w*

19 *w*